

# MICRO BLASTER

## B.B. BLASTER MICRO BLASTER

### CONTROL PANEL

- Input Socket
- Volume Control
- Tone Control
- On/Off/Overdrive Switch
- Power LED

### REAR PANEL

- Headhone Socket
- MP3 Input Socket
- Battery Compartment
- 9V battery supplied
- DC9V input socket
- Power supply not supplied

### CABINET

- 150mm(h) x 145mm (w) x 83mm (d)
- Silver cloth grille
- Black wooden cabinet
- Rubber feet
- 780gms



Features

**MP3  
Socket**



**SPACE SAVER,  
MAJOR RAVER!**

**BMB1**



## BB BLASTER 10W GUITAR AMPLIFIER

**INPUT** This is a standard 1/4" input jack for plugging in your instrument. It is intended for guitars but will accept other instruments as well.

**DRIVE/CLEAN** Push this little button to get lots more zap and blast. Check it out!

**GAIN** Adjust this clockwise to increase the amount of distortion you add to the overdrive signal. Used in the lower ranges of the control, you get a less distorted sound, a "bluesy" tone. As you increase the gain, you add tremendous amounts of distortion to the signal for a harder edged "crunch" tone.

**VOLUME** The output volume control for the entire amplifier.

### • EQUALISATION •

**BASS** Adds extra bottom end for a rounder, deeper and smoother bass tone.

**TREBLE** Adds extra treble to the bass tone for additional 'bite' and attack. Too much will give an overly abrasive sound.

**PHONES** A 1/4" jack for plugging in headphones to put the sound in both ears, creating a pseudo-stereo sound. Select sound level with the volume control. It will automatically disconnect the internal speaker when plugged in to allow quiet practising.

**POWER** This switch turns the power to the amp on and off.



# BB BLASTER



## BB BLASTER 10W BASS AMPLIFIER

**INPUT** Accepts conventional full size guitar lead jack plug. Designed for bass but will accept other instruments.

**VOLUME** Master output volume control for speaker or headphone output.

### • EQUALISATION •

**BASS** Adds extra bottom end for a rounder, deeper and smoother bass tone.

**MIDDLE** Use this control carefully to get different kinds of bass tone. Less middle gives a more defined bass and treble and a clearer bass tone. Excessive amounts of middle gives a less distinct, nasal tone.

**TREBLE** Adds extra treble to the bass tone for additional 'bite' and attack. Too much will give an overly abrasive sound.

**PHONES** Accepts normal 1/4" headphone jack plug for silent practice. Automatically cuts out unit speaker.

**POWER** Main on/off power switch.

# B.B. BLASTER

## BBG15FX GUITAR AMPLIFIER WITH EFFECTS

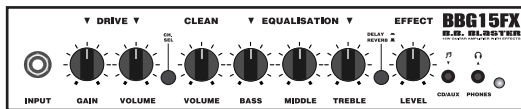


*It may only be small, but this little combo amp really does live up to its name as being a 'Blaster' in every way.*

The 15W B.B. Blaster BBG15FX is a solid two channel practice amp which delivers a crystal clear clean channel and bags of gain for when you want to get dirty. With the usual bass, middle and treble EQ set-up you can tweak your tone to create your own 'brown sound' that Eddie Van Halen endlessly searches for.

In addition you have built-in effects to play with, in the way of delay and reverb, which can be adjusted with a level control. The BBG15FX also includes an input for your CD player or MP3 player, which is a fantastic inclusion for a rehearsal amp as you can play along to your backing tracks instantly.

Just in case your neighbours are not fans of AC/DC or KISS (why not?!) you can 'rock and roll all night and party every day' with your headphones on, so all said and done this great little practice amp is everything you need.



### SPECIFICATIONS

RMS output: 15 Watts  
 Speaker: 1 x 6.5", 8 Ohm  
 EQ: Bass, middle, treble  
 Effects: Delay/reverb  
 Channels: Two  
 Inputs: Aux/CD/MP3 player  
 Headphone input: Yes  
 Dimensions: D190 / H302 / W300 (mm)  
 Weight: 5.5kg

## BBPM20

## 3 CHANNEL MIXER AMPLIFIER



A 1/4" line out provides an easy way to connect to another device such as a recorder, or another BBPM20.

If these features are still not enough, the mixer/amp can also be powered by 10 x AA batteries for music on the move, and comes with a handy pole insert, so it can be mounted on a speaker stand.

Guitar, keyboards, vocals, MP3 player - the BBPM20 from BB Blaster has got you covered!

Designed for the musician who requires monitoring for a number of different signal sources, the BBPM20 from BB Blaster is a 3 channel, 20 watt mixer monitor that has a variety of applications.

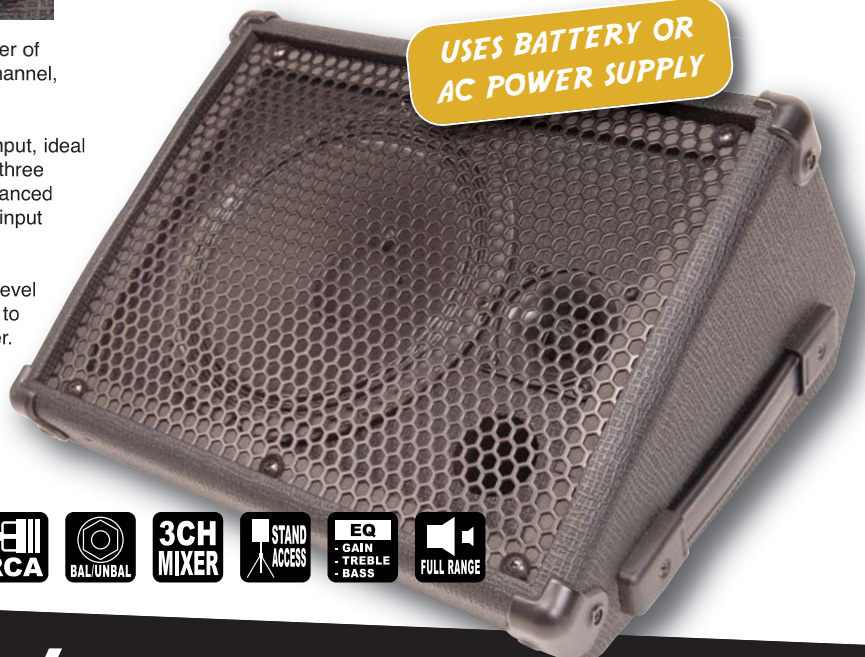
Channel one comes with a dedicated hi-impedance 1/4" jack input, ideal for instruments such as guitar or keyboards. Channel two and three have low impedance 1/4" jack inputs, with the addition of a balanced line in XLR input on channel 2 for a microphone, and a phono input on channel 3 for a CD or MP3 player.

Each of the three channels has its own gain, treble, bass and level controls, with an overall master volume providing an easy way to boost the output at a touch, through the 7" speaker and tweeter.

### SPECIFICATIONS

Dimension: 200 x 360 x 310 mm  
 Loudspeakers: 8 inch LF + 1 inch HF  
 Output: 20 watts music power  
 Power: DC15V1A (adaptor supplied) or 8 x AA sized batteries  
 Bass: -10dB - +10dB @ 180Hz  
 Treble: -10dB - +10dB @ 2kHz  
 Line Out: 1/4inch jack, output impedance 2kohm  
 Output frequency range: 50Hz - 12kHz  
 Speaker Stand Mounting Hole: 35mm (diameter)

**USES BATTERY OR AC POWER SUPPLY**



[www.jhs.co.uk](http://www.jhs.co.uk)

EXCLUSIVE WORLDWIDE TRADE DISTRIBUTORS:  
 JOHN HORNBY SKEWES & CO. LTD., SALEM HOUSE, PARKINSON APPROACH, GARFORTH, LEEDS LS25 2HR, UK.